

CYPRUS: MORTALITY DATA 2017



6191

Total number of deaths
in 2017



3275

52,9%
of the total number of deaths

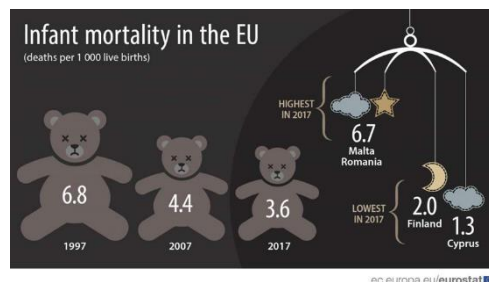


2916

47,1%
of the total number of deaths

Infant mortality rate

1,3 deaths per 1000 live births



Crude Death Rates

Males: 753,5 deaths
per 100 000 population

Females: 645,5 deaths
per 100 000 population

Standardized Death Rates

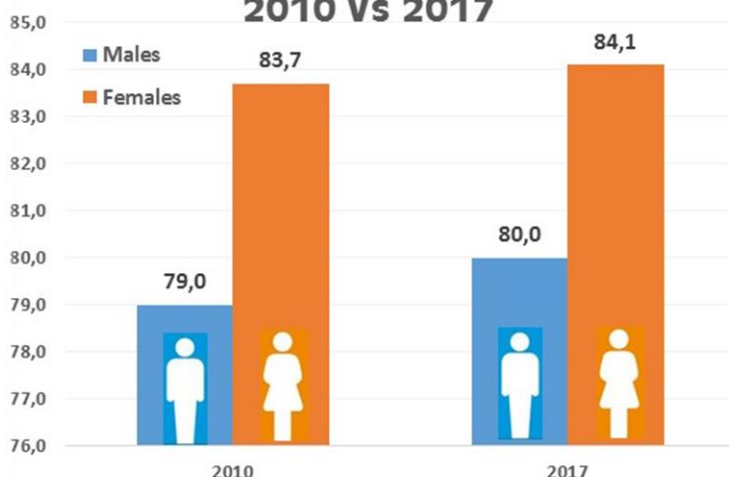
Males: 1120,5 deaths
per 100 000 population

Females: 817,5 deaths
per 100 000 population

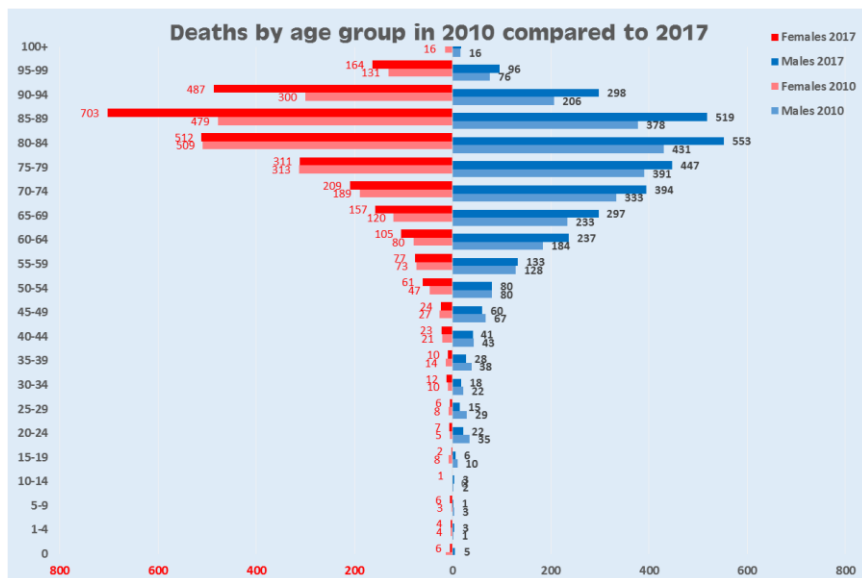
97% of the total number of deaths refers
to **Permanent Residents** of the
Cyprus Government Controlled Areas



Life expectancy at birth, 2010 Vs 2017



CYPRUS: MORTALITY DATA 2017



73% of the total number of **infant deaths** is due to **Neonatal Conditions**



Children's deaths aged **1-14 years** were mainly due to

Malignant Neoplasms 44%
Unintentional Injuries 22%

Young people 15-34 years died due to

Road Traffic Accidents 28%
Malignant Neoplasms 18%
Intentional Self-harm 13%

Risk of **fatal injury** increases significantly **after the age of 14**

The risk of **fatal injury** is **4 times higher** for **boys** than for **girls**

Almost **40%** of people aged **35-74 years** died due to **Malignant Neoplasms**

Older people aged 75 + died mainly due to **Cardiovascular Diseases**

LEADING CAUSES OF DEATH IN CYPRUS

① 32,3%

(n=2001) deaths in 2017

CARDIOVASCULAR DISEASES



4% increase
Between
2010 to 2017

② 23,0%

(n=1423) deaths in 2017

MALIGNANT NEOPLASMS



28% increase
Between
2010 to 2017

③ 8,1%

(n=501) deaths in 2017

RESPIRATORY DISEASES



81% increase
Between
2010 to 2017

④ 7,0%

(n=431) deaths in 2017

NEUROLOGICAL CONDITIONS



133% increase
Between
2010 to 2017

⑤ 5,5%

(n=341) deaths in 2017

DIABETES MELLITUS



9% increase
Between
2010 to 2017

⑥ 4,2%

(n=263) deaths in 2017

UNINTENTIONAL INJURIES



13% increase
Between
2010 to 2017